

State of Rhode Island and Providence Plantations

Budget



Fiscal Year 2014

Volume III – Education

Lincoln D. Chafee, Governor

Agency

Rhode Island Higher Education Assistance Authority

Agency Mission

The Authority provides a system of financial assistance programs consisting of the Scholarship and Grant Program, the Tuition Savings Program, and as a guaranty agency in the Federal Family Education Loan Program. Together, these programs enhance the aspirational and motivational levels of students and provide tools for educators/administrators in every school district in Rhode Island by: enabling early awareness of the relevance, importance, and value of college and career planning; promoting access to higher education; supporting the state's workforce needs; and providing financial assistance to qualified students and parents, many of whom are or might be discouraged and/or restricted from participating in post-secondary education because of insufficient financial resources.

Agency Description

The Higher Education Assistance Authority (RIHEAA or "the Authority") is organized into three divisions which administer respectively: the Scholarship and Grant Program; the Tuition Savings Program (CollegeBoundfund®); and the Loan Program. The Scholarship and Grant Program administers various student financial assistance programs funded by general revenue appropriations from the State of Rhode Island, as well as by funds received from the U.S. Department of Education and funds derived from other sources. These programs include State Scholarship/Grant Program, the Federal LEAP/SLEAP Programs and the College Access Challenge Grants. The Tuition Savings Program administers the activities of the CollegeBoundfund®, including the student financial assistance programs funded by revenues generated by CollegeBoundfund®. Those student financial assistance programs are the Academic Promise Scholarship Program, the CollegeBoundfund® Matching Grant Program and the Adult Education Grant Program. In addition, revenues from CollegeBoundfund® are used to supplement the State Grant Program. The Loan Program administers RIHEAA's activities as the state designated guaranty agency in the Federal Family Education Loan Program (FFELP) assisting students and their parents in financing higher education expenses with federally guaranteed student loans. As part of Loan Program's federally mandated responsibilities to conduct early awareness and college outreach activities, RIHEAA has initiated WaytogoRI.org, an online web portal provided free to all Rhode Island residents, all elementary and secondary schools (public, private and parochial) and post-secondary institutions. WaytogoRI.org allows students, parents and educators to explore education and career options, plan and prepare for college and careers, conduct college and career searches and apply on-line and transmit academic transcripts electronically for college admission.

Statutory History

The Authority was created in 1977 to administer the grant, scholarship, and loan programs for the State of Rhode Island, replacing a previously existing loan entity and assuming some functions of the Department of Education. Title 16 Chapter 56 and 57 of the Rhode Island General Laws establish and provide for the organization, functions, and statutory award formula of the Authority.

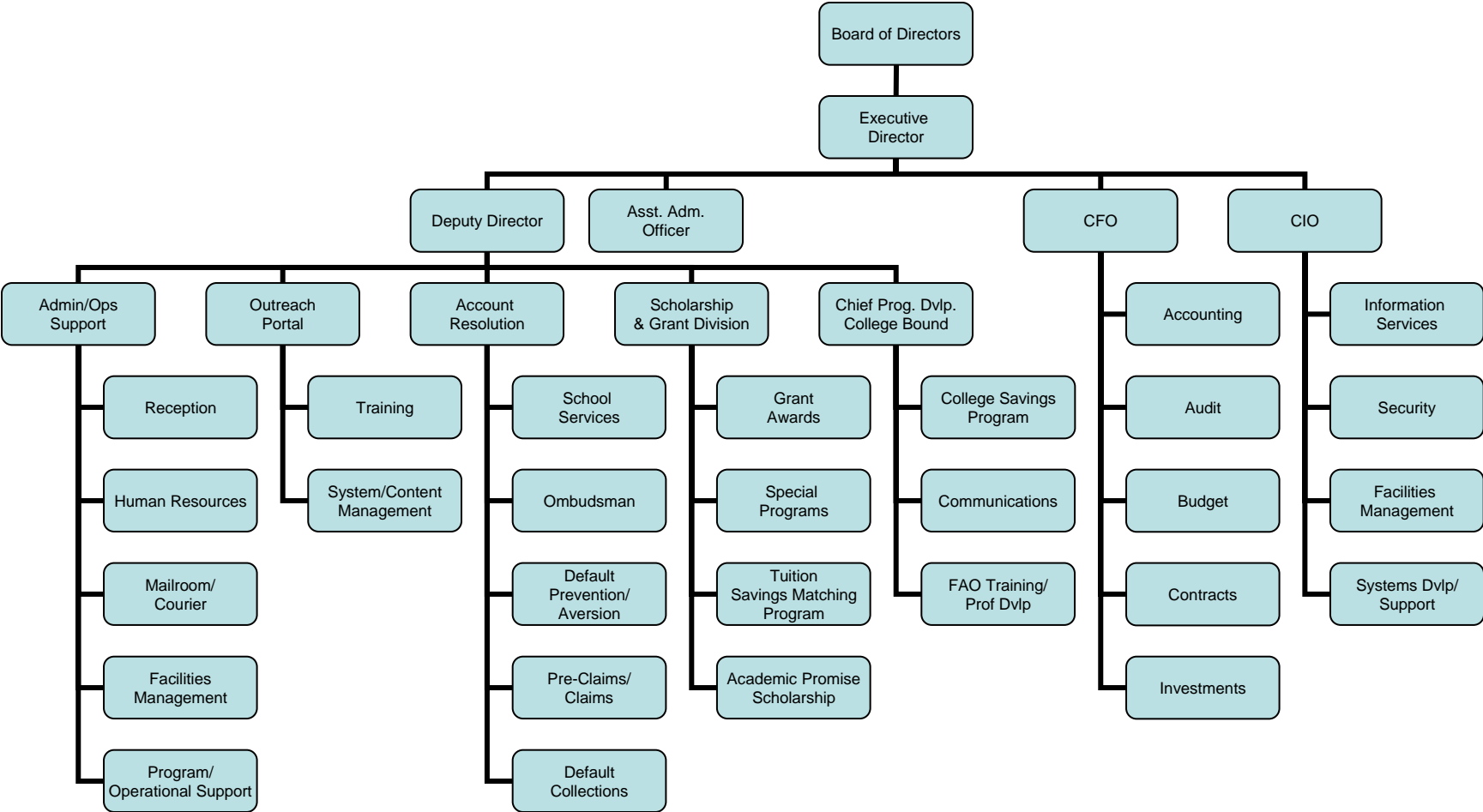
The Budget

Rhode Island Higher Education Assistance Authority Central Management

	2011 Audited	2012 Audited	2013 Enacted	2013 Revised	2014 Recommend
Expenditures By Subprogram					
Scholarship & Grants/Admin/Fed	7,733,440	5,911,331	5,617,064	5,693,667	5,231,726
Loans/Admin/Federal	9,330,982	9,566,865	13,346,283	12,814,483	13,274,020
Tuition Savings	6,608,023	8,558,270	8,758,802	8,535,829	8,457,989
Total Expenditures	\$23,672,445	\$24,036,466	\$27,722,149	\$27,043,979	\$26,963,735
Expenditures By Object					
Personnel	8,556,037	8,808,808	11,084,646	10,581,390	10,914,563
Operating Supplies and Expenses	1,693,738	1,472,258	2,976,500	2,409,586	2,467,446
Assistance and Grants	13,422,670	13,755,400	13,161,003	13,553,003	13,081,726
Aid to Local Units of Government	-	-	-	-	-
Subtotal: Operating Expenditures	23,672,445	24,036,466	27,222,149	26,543,979	26,463,735
Capital Purchases and Equipment	-	-	500,000	500,000	500,000
Total Expenditures	\$23,672,445	\$24,036,466	\$27,722,149	\$27,043,979	\$26,963,735
Expenditures By Funds					
General Revenue	7,320,186	5,911,331	5,617,064	5,693,667	5,231,726
Federal Funds	9,744,236	9,566,865	13,346,283	12,814,483	13,274,020
Other Funds	6,608,023	8,558,270	8,758,802	8,535,829	8,457,989
Total Expenditures	\$23,672,445	\$24,036,466	\$27,722,149	\$27,043,979	\$26,963,735

The Agency

Rhode Island Higher Education Assistance Authority



Personnel

Rhode Island Higher Education Assistance Authority Central Management

	Grade	FY 2013		FY 2014	
		FTE	Cost	FTE	Cost
Classified					
DEPUTY DIRECTOR, RI HIGHER EDUCATION	00043A	1.0	116,478	1.0	116,478
ASST DIR FINANCIAL & CNTR MGMT	00041A	1.0	106,620	1.0	106,620
PROGRAMMER/ANALYST MANAGER	00038A	1.0	102,041	1.0	102,041
TECHNICAL SUPPORT SPECIALIST III	00035A	1.0	86,481	1.0	86,486
PROGRAMMER/ANALYST II (UNIX/SQL)	00032A	1.0	75,122	1.0	75,122
DIRECTOR OF PROGRAM ADMINISTRATION	00031A	4.0	273,719	4.0	287,874
PROGRAMMER/ANALYST I (UNIX/SQL)	00028A	1.0	58,417	1.0	58,417
TECH SUPPORT SPEC I(OS 400 NET	00028A	1.0	51,741	1.0	53,570
SENIOR ACCOUNTANT	000001	1.0	50,449	1.0	50,449
PROGRAM PLANNER	00025A	1.0	47,745	1.0	49,309
SENIOR TELEPHONE OPERATOR	00B13A	1.0	46,019	1.0	46,019
INFORMATION SERVICES TECHNICIAN I	00016A	1.0	45,484	1.0	45,484
SYSTEMS SUPPORT TECHNICIAN I	00018A	1.0	45,373	1.0	46,510
DEPARTMENT MANAGER - RIHEAA	00024A	3.0	133,639	3.0	138,657
DEFAULT PREVENTION/COLLECTION AGENT II	00018A	2.0	85,924	2.0	86,844
ASSISTANT ADMINISTRATIVE OFFICER	00021A	2.0	82,413	2.0	84,884
STOREKEEPER	00015A	1.0	39,498	1.0	40,291
ADMIN OF PURCH SYSTEMS	00039A	1.0	38,536	1.0	39,574
EDUCATION ASST. TECHNICIAN II	000001	3.0	113,390	3.0	113,805
DEFAULT PREVENTION/COLL AGENT I	00016A	2.0	70,244	2.0	71,754
EDUCATIONAL ASSISTANCE TECHNICIAN I	00014A	3.0	101,812	3.0	103,927
Subtotal		33.0	\$1,771,145	33.0	\$1,804,115
Unclassified					
EXECUTIVE DIRECTOR	00848A	1.0	124,118	1.0	128,617
ASSISTANT ADMIN OFFICER	00021A	1.0	48,119	1.0	48,119
Subtotal		2.0	\$172,237	2.0	\$176,736
Nonclassified					
ASSISTANT DIRECTOR	000016	1.0	50,245	1.0	50,245
Subtotal		1.0	\$50,245	1.0	\$50,245
Turnover		-	(301,204)	-	(125,911)
Subtotal		-	(\$301,204)	-	(\$125,911)
Total Salaries		36.0	\$1,692,423	36.0	\$1,905,185
Benefits					
Payroll Accrual			9,407		10,446
FICA			132,310		145,666
Retiree Health			104,354		96,686
Health Benefits			389,563		495,324
Retirement			351,853		359,811
Subtotal			\$987,487		\$1,107,933

Personnel

Rhode Island Higher Education Assistance Authority Central Management

	Grade	FY 2013		FY 2014	
		FTE	Cost	FTE	Cost
Total Salaries and Benefits		36.0	\$2,679,910	36.0	\$3,013,118
Cost Per FTE Position (excluding Statewide Benefit Assessment)			\$74,442		\$83,698
Statewide Benefit Assessment			\$63,380		\$71,445
Payroll Costs		36.0	\$2,743,290	36.0	\$3,084,563
Purchased Services					
Management & Consultant Services			7,610,850		7,605,000
Legal Services			227,250		225,000
Subtotal			\$7,838,100		\$7,830,000
Total Personnel		36.0	\$10,581,390	36.0	\$10,914,563
Distribution By Source Of Funds					
General Revenue		2.2	\$234,664	-	-
Federal Funds		32.8	\$10,191,409	33.8	\$10,638,285
Other Funds		1.0	\$155,317	2.2	\$276,278
Total All Funds		36.0	\$10,581,390	36.0	\$10,914,563

Performance Measures

Rhode Island Higher Education Assistance Authority Central Management

Grant Recipients

Eligibility for state grants is determined using a calculation of financial need. This includes family resources, tuition, room and board and fees, and other forms of financial aid available to the student. The figures below represent the percentage of eligible students receiving state grants. [Performance data and targets are provided by State fiscal year. The 2013 Actual figure represents performance data from the first four months of FY 2013 (7/1/12 through 10/31/12).]

	2011	2012	2013	2014
Target	70.0%	70.0%	70.0%	70.0%
Actual	48.7%	52.1%	57.6%	--

Grant Awards

The figures below represent the average award made to Rhode Island students. [Performance data and targets are provided by State fiscal year. The 2013 Actual figure is calculated by taking funds that will be available for grants and dividing by the number of students expected to receive awards.]

	2011	2012	2013	2014
Target	\$1,128	\$1,128	\$1,128	\$1,128
Actual	\$751	\$614	\$525	--

WaytoGoRI Web

RIHEAA provides and funds the WaytoGoRI portal as part of its Guaranty Agency operations. It provides education and financial planning information free of charge to all Rhode Island students, families and schools. The figures below represent the total number of views users have made in the WaytoGoRI portal during the year. [2011 Actuals reflects usage during that calendar year, and 2012 Actuals is an estimate of the full calendar year based upon usage through October 2012.]

	2011	2012	2013	2014
Target	N/A	N/A	4,200,000	4,200,000
Actual	3,174,837	4,110,642	--	--

Revenue Transferred to RI Scholarship and Grant Programs

The figures below represent the amount of revenue that is used to fund student financial assistance programs that benefit Rhode Island students and families. [Performance data and targets are provided by State fiscal year. The 2013 Actual figure represents performance data from the first four months of FY 2013 (7/1/12 through 10/31/12).]

	2011	2012	2013	2014
Target	N/A	N/A	\$8,250,000	\$8,250,000
Actual	\$6,300,000	\$8,341,000	\$8,250,000	--